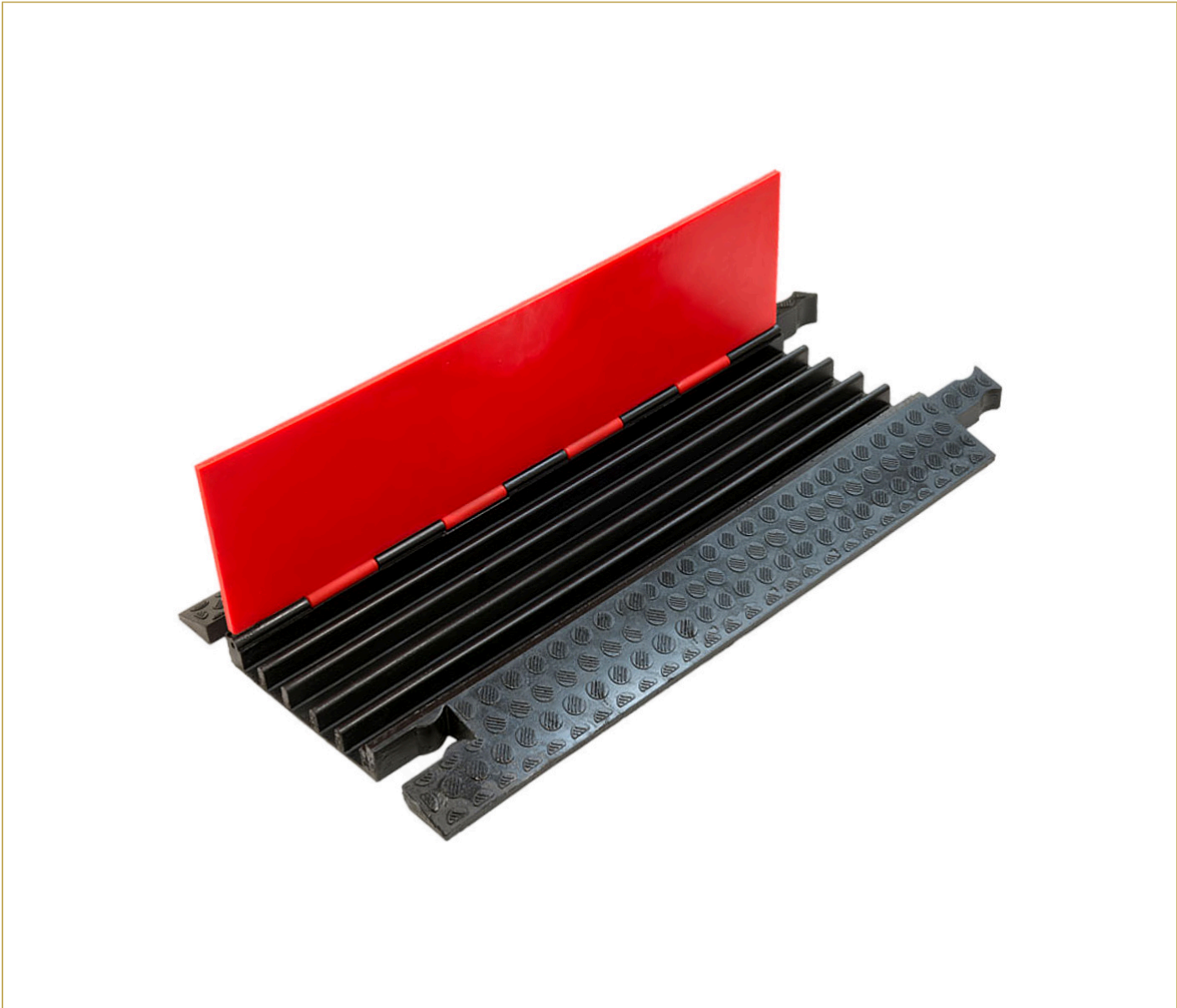


STANDARD RED LINE 5-CHANNEL CABLE RAMP



Durable and heavy-duty 5-channel cable ramp designed for safe cable protection in high-traffic areas.

SKU: N/A | **Categories:** [Cable Ramps and Protectors](#)



PRODUCT DESCRIPTION

The Red Line 5-Channel Cable Ramp offers robust protection for cables and hoses in high-traffic areas, ensuring safety for both pedestrians and vehicles. With five spacious channels, this heavy-duty ramp is ideal for event venues, construction sites, and industrial environments where secure cable management is critical. The modular design allows for easy installation, while its high-visibility red surface ensures maximum safety and awareness.

Built from durable materials, the Red Line Cable Ramp is engineered to withstand heavy loads, protecting your cables from damage. The interlocking system enables multiple ramps to be connected for longer cable runs, offering a flexible solution for large-scale events or projects.

TECHNICAL INFORMATIONS

Weight	45.19 lbs
Dimensions	35.83 x 24.25 x 2.91 in
Channels	5
Channel Size	2.17 x 2.17 inches (W x H)
Weight Capacity	Supports heavy vehicle traffic
Max Load per Axle	25,353 lbs at 68°F
Connector Type	Large Dog Bone Connectors
Special Capacity	Houses Powerline QC single pole connectors in each channel



